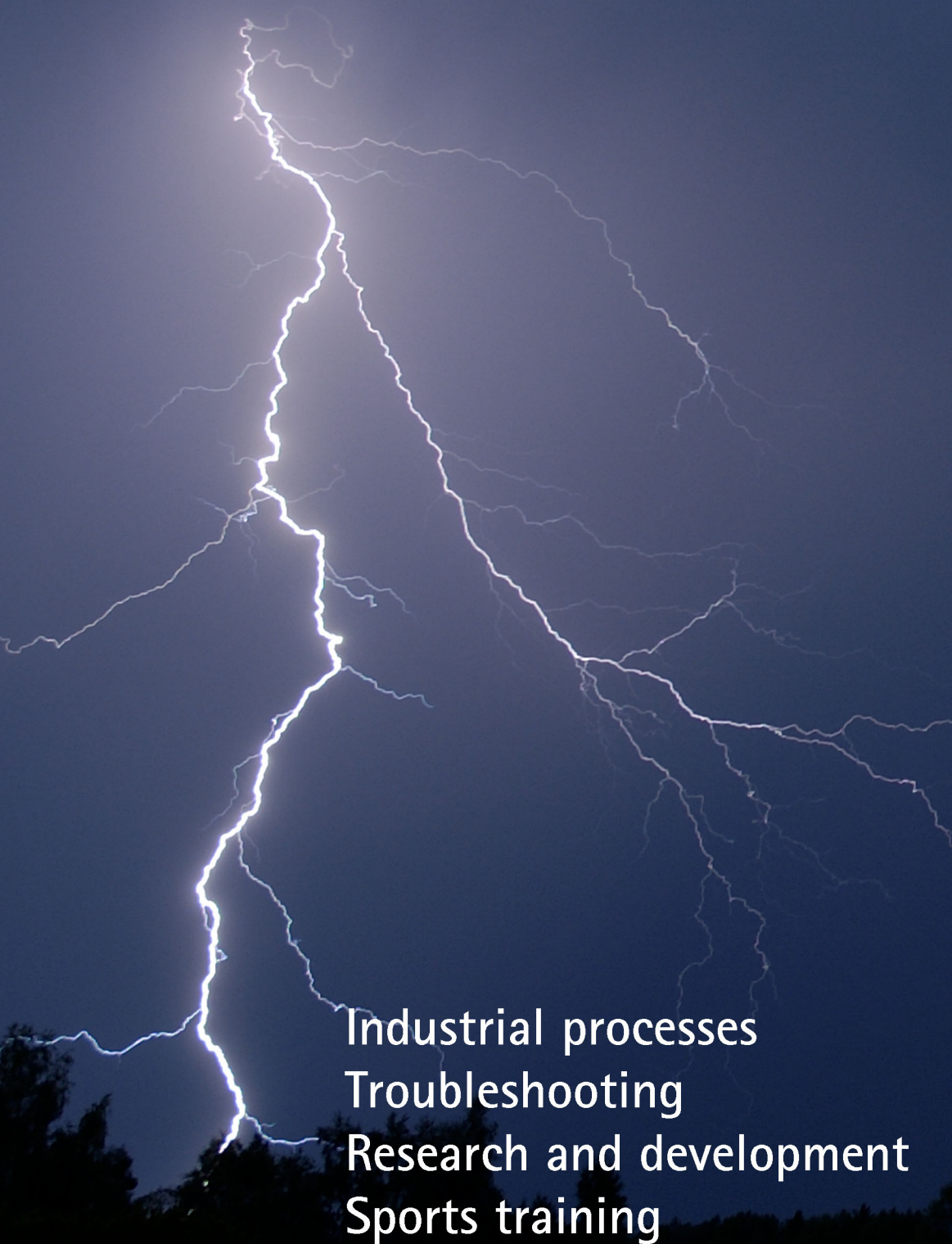




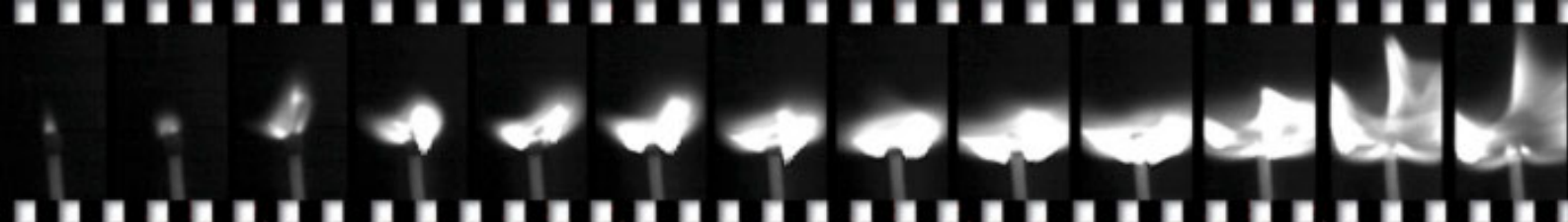
IT-Line

High Speed Imaging



Industrial processes
Troubleshooting
Research and development
Sports training





High speed imaging service provided by IT-Line Oy

High speed imaging is a solution, which can be used to record phenomena, that take place faster than a human eye can analyze them. You can watch a recorded image in slow motion or picture by picture. In that way it is possible to analyze even very small details in events that take place lightning fast.

IT-Line Oy brings high speed imaging out from the laboratory to the field, where the actual objects are and where the events take place.

Compared to the typical video imaging, it is possible to reach a one hundred times higher speed with the high speed imaging. In that case usability of the slow motion and stopped pictures is critically better. Yet the costs are not bigger at all.

The recorded image can be analyzed immediately after imaging the event. And the impacts, which the changes made based upon the observations in the recorded image have, can be recorded as well and then compared to the earlier records side by side.

The records can be copied to a CD-ROM, so they are available for the customer immediately after the imaging. They can be delivered to the customer also in format, in which the customer can distribute them electronically for instance via www or by email.

Additional information and demo videos in:

<http://www.it-line.fi/video/>

High speed imaging applications:

Industrial processes

High speed imaging gives quickly reliable additional information on malfunctions in industrial processes. Due to that information corrective actions and adjustment procedures will become significantly more efficient. In addition deviations that occur only occasionally or seldom can be recorded.

Troubleshooting and corrective actions

Corrective actions taken to remedy malfunctions in equipment have impacts, which can be confirmed immediately with facts. Whereas when traditional methods are used impacts will be only learned by trial and error and they will remain as mere theories.

Research and development

With a deeper knowledge of the object, planning actions can be targeted to right areas. And development and results can be documented phase by phase.

Sports training

Sports actions can be analyzed more accurately than earlier. That is because the slow motion pictures are considerably more detailed compared to the typical video images

IT-Line Oy is a company specialized in production services for paper, electronics and other process industry.

Our services include installations, service and corrective actions, programming, training and designing, manufacturing and high speed imaging.

We can offer you a wide range of knowledge, which is based on our long experience in demanding tasks of paper industry and on our modern IT know-how.



Address

IT-Line Oy

phone +358 2 7374 477

Lairolantie 6

fax +358 2 7374 455

24910 Halikko as.

email it-line@it-line.fi

Finland

www <http://www.it-line.fi/>